

# The NEAX<sup>®</sup> IPS<sup>DM</sup>

The Promise Fulfilled



# Technology that helps you work smarter, not harder.

*Delivering the benefits of pure IP Telephony... without compromise.*

Take advantage of the benefits of pure peer-to-peer IP Telephony for your small to midsize business with the NEAX IPS<sup>DM</sup> and choose from the hundreds of traditional PBX features you've come to expect from NEC.

## Pure Converged IP Network

The NEAX IPS<sup>DM</sup> has been engineered for optimal performance in a pure converged IP network,

whereas its complementary counterpart, the NEAX 2000 IPS is designed primarily for a mixed (i.e., TDM and IP) network. Both products support numerous features and services not typically found in today's IP-based Telephony systems.




## Flexible Networking

While the NEAX IPS<sup>DM</sup> is designed primarily for IP networking, it also supports traditional analog trunks and digital trunks for connection to the Public Switched Telephone

Network. Peer-to-peer CCIS networking connects up to 255 NEAX 2000 IPS, NEAX IPS<sup>DM</sup>, NEAX 2400 IPX and NEAX IPX<sup>DM</sup> systems.

## Scalable-Voice-Over-IP & Legacy TDM

The NEAX IPS<sup>DM</sup> supports up to 448 peer-to-peer IP ports and 40 legacy TDM ports in a single modular chassis. Up to three chassis can be stacked providing maximum capacity of as many as 320 peer-to-peer IP ports while still supporting up to 120 legacy TDM ports. The NEAX IPS<sup>DM</sup> comes equipped for 19" rack mounting.

NEAX <sup>®</sup> IPS <sup>DM</sup> Scalability					
					
Virtual PIM 448 IP Ports		Virtual PIM 384 IP Ports*		Virtual PIM 320 IP Ports*	
40 LT Ports		40 LT Ports	24 Virtual LT Ports	40 LT Ports	24 Virtual LT Ports
24 Virtual LT Ports		40 LT Ports	24 Virtual LT Ports	40 LT Ports	24 Virtual LT Ports
		256 AP Ports			
		256 Virtual Stations			
				PIM 2	
				PIM 1	
				PIM 0	

\*As the number of TDM ports increases, the number of IP ports decreases.



## Reduced Costs of Peer-to-Peer IP Connectivity

The NEAX IPS<sup>DM</sup> retains all its features while offering significant cost savings associated with peer-to-peer IP Telephony such as:

### Converged WAN

**Infrastructures** — Pay for service and maintenance of one network rather than two. By transporting voice signals across the Wide Area Network as IP packets, users can integrate their voice traffic with their data traffic.

### Converged LAN

**Infrastructures** — Establish voice calls across the 10/100 Ethernet Local Area Network utilizing the existing cabling plant and allowing single cable termination to the desktop.

### Reduced Equipment

**Requirements** — In traditional TDM telephony, a single port is required for each station and each tie line connection. With IP connectivity, multiple calls are controlled through a single 10/100 Ethernet port while voice travels directly between the user telephones.

The NEAX IPS<sup>DM</sup> reduces the need for cards while minimizing the required system footprint.

## Investment Protection

Even if you're not ready to deploy 100% IP Telephony immediately, the NEAX IPS<sup>DM</sup> supports traditional circuit-switched telephony (Time Division Multiplexed) on both the trunk and line sides. This simultaneous compatibility allows existing users of NEAX systems to have the best of both worlds.

## The Promise of NEON

Migration with investment protection is the cornerstone of NEC's Enterprise Open Network (NEON). NEON embodies NEC's philosophy that drives development of complementary communication solutions for OPEN networks, delivering value-added capabilities and quality of service, while protecting investment; all without compromising the user experience.

## Functions Alone or in a Network

The NEAX IPS<sup>DM</sup> functions as a standalone telephony system supporting both IP and traditional circuit-switched connectivity. Yet it can also be seamlessly networked with other NEC telephony devices such as the NEAX 2400 IPX, NEAX IPX<sup>DM</sup> and NEAX 2000 IPS units. NEAX IPS<sup>DM</sup> supports node-to-node peer-to-peer connectivity.

## The Bottom Line

The NEAX IPS<sup>DM</sup> offers the full complement of NEAX features while utilizing less equipment and occupying less floor space. Additionally, NEC's broad range of IP phone sets all have two-port switches for easy pass-through to the users PC, facilitating one-cable termination to the desktop.

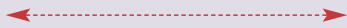
Furthermore, with NEC's migration strategy, you can deploy IP Telephony today confident that NEC will provide a migration path to future technologies while protecting your investment.

## What is Peer-to-Peer Switching?

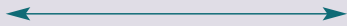
"Peer-to-peer" switching means that the stations participating in a call are connected directly to each other through the IP network. The signals travel through the IP network but do not "go through" the switching matrix of the PBX as they do in traditional telephony. The fact that the NEAX IPS<sup>DM</sup> can function in and support a "hybrid" network with traditional digital/analog switching, IP/TDM/IP switching and pure peer-to-peer IP switching means that users can continue to utilize their existing equipment while they begin to phase in IP Telephony. This lays the foundation for future networks.

## NEAX IPS<sup>DM</sup> Features

- Intra-nodal and inter-nodal peer-to-peer IP connectivity
- Supports legacy TDM for digital and analog telephony
- Full-featured node-to-node CCIS inter-networking
- Supports full range of NEC IP telephone sets
- Uses the same CPU and Line cards as the NEAX 2000 IPS

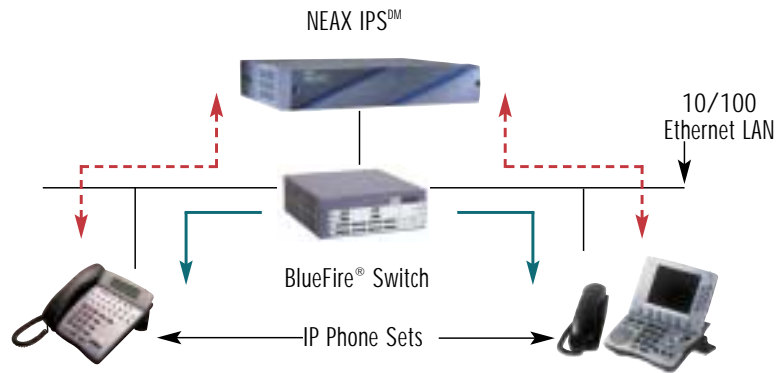


The NEAX IPS<sup>DM</sup> unit assists in the call setup process and provides the full range of NEAX telephony features

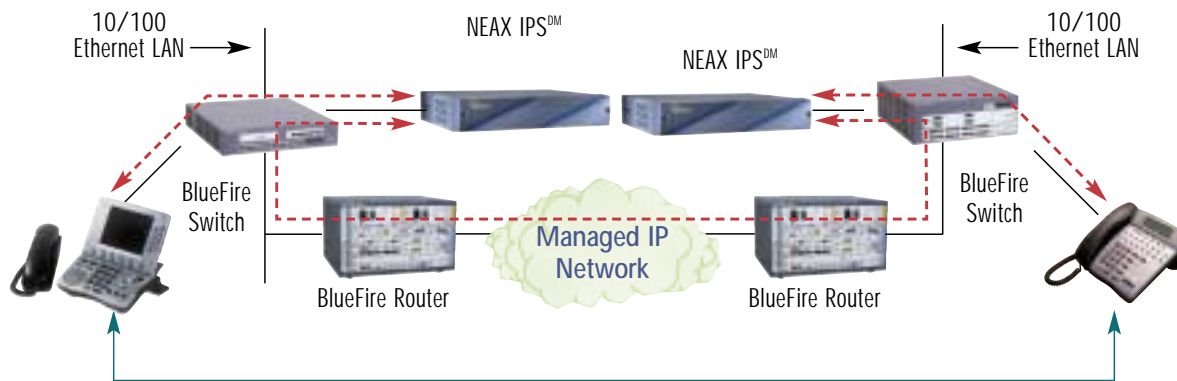


Once the call is established, it is "carried" only by the network. The NEAX IPS<sup>DM</sup> unit only "re-enters" when requested to provide a function such as conferencing in a third party

### Node-to-Node Peer-to-Peer IP Connectivity In LAN\*



### Node-to-Node Peer-to-Peer IP Connectivity Across WAN



\*The NEAX IPS<sup>DM</sup> was designed for deployment utilizing NEC BlueFire equipment as well as other vendors' routers and switches in an open standards environment.

